

**WESTUL**<sup>®</sup>  
PROFESSIONALITAT

Zhejiang Westul Trading Co.,Ltd.  
Address: Jinhua Information Economy Industrial Park, Liyu Road, Xiguan  
Street, Wucheng District, Jinhua City, Zhejiang Province, China  
E-Mail: sales@westul.cn  
<http://www.westul.net>

**WESTUL**<sup>®</sup>  
PROFESSIONALITAT

**CATALOGO 2024**



# HVLP Spray Gun Series

Quick release function for easy cleaning



# HVLP Spray Gun Series






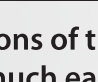



**WT-FB13A**

This pistol fits to both Floor Based Sprayer & Hand Held Sprayer

⚠ Include more dia. nozzles for precise painting

⚠ Same nozzle for WT-FB17A, WT-HH15A, WT-HH12B, WT-FB13B, WT-FB14BD, WT-FB13C-T, WT-FB14D-T

<b>1.0mm</b>		1.0mm for low viscosity in perfect finishing Better for oil-based paint	<b>1.0mm</b>		1.0mm for low viscosity in perfect finishing Better for oil-based paint
<b>1.5mm</b>		1.5mm for low viscosity in perfect finishing Better for oil-based paint	<b>1.8mm</b>		1.8mm for low viscosity in perfect finishing Better for oil-based paint
<b>1.8mm</b>		1.8mm for high viscosity in better atomization Better for water-based paint	<b>2.6mm</b>		2.6mm for high viscosity in better atomization Better for water-based paint
<b>2.6mm</b>		2.6mm for high viscosity in better atomization Better for water-based paint	<b>3.0mm</b>		3.0mm for high viscosity in better atomization Better for water-based paint

⚠ Indications of three spray patterns on tooling which much easier for users to understand

⚠ Also, can add some extra canisters with cap into the package:





## Brief Introduction:

Jinhua Jinshun Tools Co., Ltd was established in 1996, with a possession area of **42,000** square meters, and construction area **63,000** square meters. Our annual output is more than 4 million pieces.

We are specialized in manufacturing heating tools, painting tools and other DIY household tools.

Our painting tools include Solenoid Spray Guns, Cordless Spray Guns, HVLP Floor Based Spray Guns, HVLP Hand Held Spray Guns, Electric Paint Rollers, etc. Our heating tools include Soldering Guns, Heat Guns, Heavy Duty Hot Knives, etc. Our household tools include Electric Blower, Multi-Purpose Sharpeners, etc.

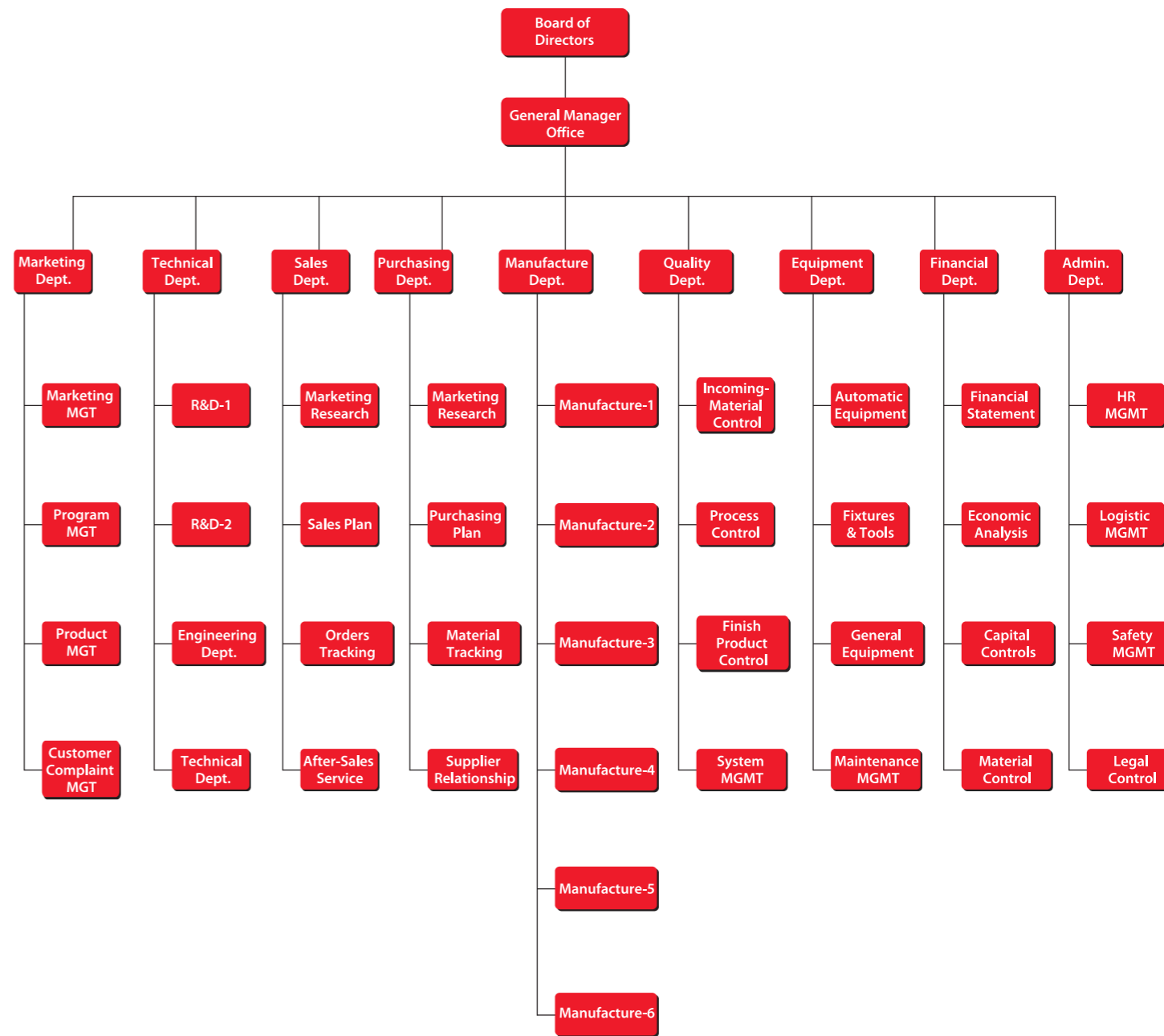
100% products have GS/CE/EMC/RoHS certificates, and more than 80% of our products have approval of UL/CUL/ETL. In 2006, we obtained ISO9001, ISO14001, ISO18001 certifications which are issued by TUV Rheinland. And we became member of BSCI from the year of 2008, our ID is #8297.

All of our products are exported to Europe, North America, South America, Oceania, Middle East and Asia, of which are over 80 countries. We enjoy good reputation for our strong innovation ability. We have established long-term cooperation with universities on R&D, which ensures us to present new series of products each year. Before Feb. 2015, we have obtained more than 100 patents. Moreover, we have rich experience in OEM and ODM projects.

We, Jinhua Jinshun Tools Co., Ltd. appreciate support and cooperation from our customers and sincerely hope that the business relationship will be continuously growing in future. We warmly welcome new customers from all over the world to visit us and to get a better understanding of our company . Please feel free to contact us for more details.



## COMPANY ORGANIZATION CHART



## CONTENTS

**01-26** HVLP Spray Gun



**27-32** Solenoid Spray Gun



**33-34** Electric Paint Roller



**35-42** Heat Gun



**43-44** Electric Blower



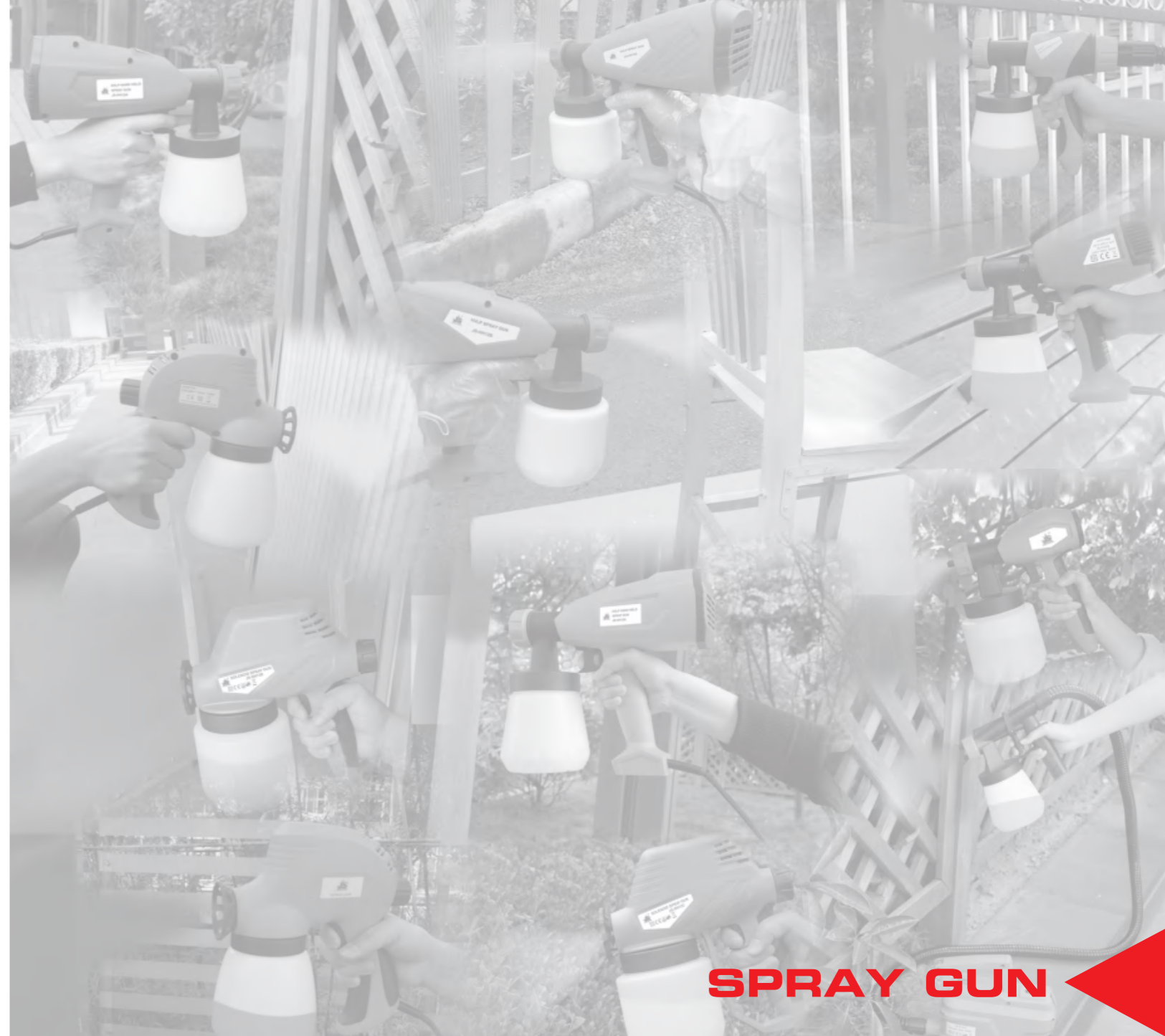
**45-48** Soldering Gun



**49-50** Multi-Purpose Sharpener



**51-54** Dust Catcher & Laser Level



**SPRAY GUN**

## DC Battery + Charger

### 20V Battery Charger



Model	WTCV2026	
Input:	Rated Voltage	100-240V AC
	Rated Frequency	50Hz / 60Hz
	Rated Power	<b>65W</b>
Output:	Rated Voltage	20.5V DC
	Current Draw	<b>2.6A</b>

🔴 Battery indicator shows battery status

### 20V Lithium-Ion 2.0Ah 40Wh



🔴 No-load working time: 1 hour

Model	WTB20200121
Rated Voltage	<b>20V</b>
Battery Cell Type	Lithium-Ion
Battery Capacity	<b>2Amp Hours</b>

### 20V Lithium-Ion 4.0Ah 80Wh



🔴 No-load working time: 2 hours

Model	WTB20400221
Rated Voltage	<b>20V</b>
Battery Cell Type	Lithium-Ion
Battery Capacity	<b>4Amp Hours</b>



Model	WT-SN15C-LI
Rated Voltage	20V DC
Current Draw	<b>4.0A</b>
Max. Flow	<b>300ml/min</b>
Max. Viscosity	<b>60din/sec</b>
Paint Reservoir	1000ml
Battery capacity	<b>2.0Ah</b>
Working efficiency	8000ml
Nozzle	Φ0.8mm
Packing Size	29.5x12.5x28.5cm
Net Weight	1.8kgs
Q'ty of 20'/40'/40'HQ	2165/4650/5500pcs

#### Accessories:

- 1pc viscosity measuring cup,
- 1pc Φ0.8mm spare nozzle,
- 2pcs valves,
- 1pc clean pin,
- 1pc wrench,
- 1pc quick charger,
- 1pc Lithium battery.



# DC HVLP Hand-Held Spray Gun



**Built-in air turbine and sprayer in one low vibration and low sound**

Model	WT-PHD2420
Rated Voltage	20 V DC
Current Draw	<b>13.0A</b>
Max. Flow	<b>800ml/min</b>
Max. Viscosity	<b>120din/sec</b>
Paint Reservoir	1000ml
Battery capacity	<b>4.0Ah</b>
Working efficiency	8000ml
Nozzle	Φ1.8mm / Φ2.6mm
Packing Size	30.0x13.0x30.5cm
Net Weight	1.93kgs
Q'ty of 20'/40'/40'HQ	2152/4112/4700pcs



**Accessories:**  
1pc viscosity measuring cup,  
1pc Φ1.0/1.5/1.8/2.6/3.0mm spare nozzle (Optional Accessories),  
1pc quick charger,  
1pc Lithium battery.



# DC HVLP Hand-Held Spray Gun



**Quick release and easy cleaning**

Model	WT-PHD2420-2A
Rated Voltage	20 V DC
Current Draw	<b>13.0A</b>
Max. Flow	<b>800ml/min</b>
Max. Viscosity	<b>120din/sec</b>
Paint Reservoir	1000ml
Battery capacity	<b>2.0Ah</b>
Working efficiency	8000ml
Nozzle	Φ1.8mm / Φ2.6mm
Packing Size	30.0x13.0x30.5cm
Net Weight	1.90kgs
Q'ty of 20'/40'/40'HQ	2152/4112/4700pcs



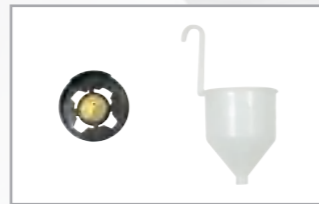
**Accessories:**  
1pc viscosity measuring cup,  
1pc Φ1.0/1.5/1.8/2.6/3.0mm spare nozzle (Optional Accessories),  
1pc quick charger,  
1pc Lithium battery.



# DC HVLP Hand Held Spray Gun



Model	WT-PHD0118
Rated Voltage	20 V DC
Current Draw	15.0A
Max. Flow	1000ml/min
Max. Viscosity	120din/sec
Paint Reservoir	800ml
Battery capacity	2.0Ah or 4.0Ah
Working efficiency	8000ml
Nozzle	Φ1.5mm / Φ2.6mm
Packing Size	30.0x13.0x30.5cm
Net Weight	1.93kgs
Q'ty of 20'/40'/40'HQ	2152/4112/4700pcs



**Accessories:**

- 1pc viscosity measuring cup,
- 1pc Φ1.0/1.5/1.8/2.6/3.0mm spare nozzle (Optional Accessories),
- 1pc quick charger,
- 1pc Lithium battery.



# HVLP Hand Held Spray Gun

# HVLP Hand Held Spray Gun



Model	WT-PHA2520	
Rated Voltage	220-240V~	120V~
Rated Frequency	50Hz	60Hz
Rated Power	<b>450W</b>	<b>3.75A</b>
Max. Flow	<b>350ml/min</b>	
Max. Viscosity	<b>50din/sec</b>	
Paint Reservoir	700/800/1300ml	
Nozzle	Φ1.8/2.6mm	
Net Weight	1.3kgs	
Unit Size	27.9x25.3x11.6cm	
Q'ty per Carton	6pcs	
Q'ty of 20'/40'/40'HQ	3450/6990/7700pcs	



**Accessories:**  
1pc viscosity measuring cup,  
1pc Φ1.8/2.6mm nozzle.



Model	WT-PHA0118	
Rated Voltage	220-240V~	120V~
Rated Frequency	50Hz	60Hz
Rated Power	<b>550W</b>	<b>4.0A</b>
Max. Flow	<b>1200ml/min</b>	
Max. Viscosity	<b>120din/sec</b>	
Paint Reservoir	800/1300ml	
Nozzle	Φ1.8/2.6mm	
Net Weight	1.3kgs	
Unit Size	26x24.5x16cm	
Q'ty per Carton	6pcs	
Q'ty of 20'/40'/40'HQ	2370/4962/5514pcs	



**Accessories:**  
1pc viscosity measuring cup,  
1pc Φ1.8/2.6mm nozzle.





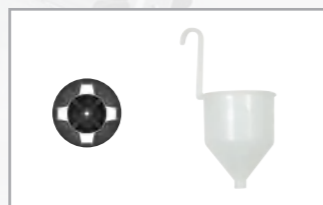
# HVLP Hand Held Spray Gun



Quick release and easy cleaning



Model	WT-HH12B	
Rated Voltage	220-240V~	120V~
Rated Frequency	50Hz	60Hz
Rated Power	<b>500W</b>	<b>3.0A</b>
Max. Flow	<b>900ml/min</b>	
Max. Viscosity	<b>100din/sec</b>	
Paint Reservoir	700/800/1300ml	
Nozzle	Φ1.8/2.6mm	
Net Weight	1.5kgs	
Unit Size	30.2x26.1x11.9cm	
Q'ty per Carton	6pcs	
Q'ty of 20'/40'/40'HQ	2892/6000/6690pcs	



**Accessories:**  
1pc viscosity measuring cup,  
1pc Φ1.8/2.6mm nozzle.



# HVLP Hand Held Spray Gun

**Features:**

- Multiple spraying patterns: round, horizontal & vertical fan
- Adjustable spray flow
- Fast paint changing and easy cleaning



Adjustable spray flow

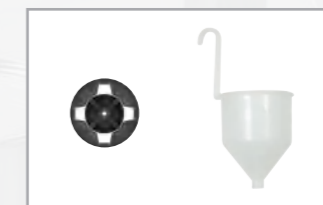


Quick release and easy cleaning

- Quick release function for easy clean



Model	WT-910FB	
Rated Voltage	220-240V~	120V~
Rated Frequency	50Hz	60Hz
Rated Power	<b>400W</b>	<b>2.6A</b>
Max. Flow	<b>800ml/min</b>	
Max. Viscosity	<b>60din/sec</b>	
Paint Reservoir	700/800ml	
Nozzle	Φ1.8/2.6mm	
Net Weight	1.6kgs	
Unit Size	28.5x27.9x12.0cm	
Q'ty per Carton	4pcs	
Q'ty of 20'/40'/40'HQ	2140/4360/4860pcs	



**Accessories:**  
1pc viscosity measuring cup,  
1pc Φ1.8/2.6mm nozzle.



# HVLP Hand Held Spray Gun

# HVLP Hand Held Spray Gun



**Quick release and easy cleaning**

Model	WT-HH15A	
Rated Voltage	220-240V~	120V~
Rated Frequency	50Hz	60Hz
Rated Power	<b>400W</b>	<b>2.2A</b>
Max. Flow	<b>800ml/min</b>	
Max. Viscosity	<b>60din/sec</b>	
Paint Reservoir	700/800/1300ml	
Nozzle	Φ1.8/2.6mm	
Net Weight	1.3kgs	
Unit Size	27.9x25.3x11.6cm	
Q'ty per Carton	6pcs	
Q'ty of 20'/40'/40'HQ	3450/6990/7700pcs	

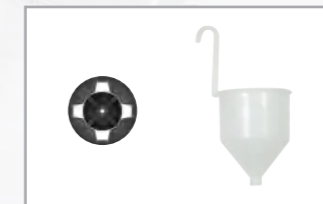


**Accessories:**  
1pc viscosity measuring cup,  
1pc Φ1.8/2.6mm nozzle.



**Quick release and easy cleaning**

Model	WT-HH12A	
Rated Voltage	220-240V~	120V~
Rated Frequency	50Hz	60Hz
Rated Power	<b>350W</b>	<b>2.2A</b>
Max. Flow	<b>700ml/min</b>	
Max. Viscosity	<b>60din/sec</b>	
Paint Reservoir	700/800/1300ml	
Nozzle	Φ1.8/2.6mm	
Net Weight	1.3kgs	
Unit Size	27.9x25.3x11.6cm	
Q'ty per Carton	6pcs	
Q'ty of 20'/40'/40'HQ	3450/6990/7700pcs	



**Accessories:**  
1pc viscosity measuring cup,  
1pc Φ1.8/2.6mm nozzle.



# HVLP Floor Based Spray Gun



Model	WT-FB17AI	
Rated Voltage	220-240V~	120V~
Rated Frequency	50Hz	60Hz
Rated Power	<b>800W</b>	<b>4.2A</b>
Max. Flow	<b>1100ml/min</b>	
Max. Viscosity	<b>120din/sec</b>	
Paint Reservoir	700/800/1300ml	
Nozzle	Φ1.8/2.6mm	
Hose Length	1.8m	
Packing Size	27.5x23x25.5cm	
Packing Weight	2.2kgs	
Q'ty of 20'/40'/40'HQ	1600/3200/3840pcs	



**Accessories:**  
1pc viscosity measuring cup, 1pc shoulder belt,  
1pc Φ1.8/2.6mm nozzle, 1pc 1.8m hose.



# HVLP Floor Based Spray Gun



Model	WT-FB17AII	
Rated Voltage	220-240V~	120V~
Rated Frequency	50Hz	60Hz
Rated Power	<b>650W</b>	<b>4.2A</b>
Max. Flow	<b>800ml/min</b>	
Max. Viscosity	<b>60din/sec</b>	
Paint Reservoir	700/800/1300ml	
Nozzle	Φ1.8/2.6mm	
Hose Length	1.8m	
Packing Size	27.5x23x25.5cm	
Packing Weight	2.2kgs	
Q'ty of 20'/40'/40'HQ	1600/3200/3840pcs	



**Accessories:**  
1pc viscosity measuring cup, 1pc shoulder belt,  
1pc Φ1.8/2.6mm nozzle, 1pc 1.8m hose.



# HVLP Floor Based Spray Gun



• Quick release function for easy clean

• Multiple spraying patterns

• Dust proof and moisture proof on-off switch

• Easily replaceable filter



**Accessories:**

1pc viscosity measuring cup, 1pc shoulder belt, 1pc  $\Phi$ 1.8/2.6mm nozzle, 1pc 1.8m hose.



Model	WT-FB14BD	
Rated Voltage	220-240V~	120V~
Rated Frequency	50Hz	60Hz
Rated Power	<b>950W</b>	<b>4.7A</b>
Max. Flow	<b>1000ml/min</b>	
Max. Viscosity	<b>100din/sec</b>	
Paint Reservoir	800ml	
Nozzle	$\Phi$ 1.8/2.6mm	
Hose Length	1.8m	
Q'ty per Carton	2pcs	
Q'ty of 20'/40'/40'HQ	1050/2100/2464pcs	

# HVLP Floor Based Spray Gun

**Features:**

- New nozzle, with indications of 3 spraying patterns.WESTUL's innovative design.
- Extra accessories case to put other diameter's nozzles.WESTUL's innovative design.
- Quick change filter.WESTUL's innovative design.
- Quick release from pistol part,more convenient for cleaning.
- Soft grip for better handling.



• Quick release function for easy clean

• Multiple spraying patterns



• Accessories case

• Easily replaceable filter



**Accessories:**

1pc viscosity measuring cup, 1pc shoulder belt, 1pc  $\Phi$ 1.8/2.6mm nozzle, 1pc 1.8m hose.



Model	WT-FB13B	
Rated Voltage	220-240V~	120V~
Rated Frequency	50Hz	60Hz
Rated Power	<b>650W</b>	<b>3.5A</b>
Max. Flow	<b>800ml/min</b>	
Max. Viscosity	<b>60din/sec</b>	
Paint Reservoir	800ml	
Nozzle	$\Phi$ 1.8/2.6mm	
Hose Length	1.8m	
Q'ty per Carton	2pcs	
Q'ty of 20'/40'/40'HQ	1050/2104/2464pcs	

# HVLP Floor Based Spray Gun

## Features:

- Multiple spraying patterns: round, horizontal & vertical fan.
- Adjustable spray flow.
- Quick paint changing and easy cleaning.



• Dust proof and moisture proof on-off switch

**Built-in air turbine and sprayer in one low vibration and low sound**

Model	WT-910FA	
Rated Voltage	220-240V~	120V~
Rated Frequency	50Hz	60Hz
Rated Power	<b>500W</b>	<b>3.0A</b>
Max. Flow	<b>320ml/min</b>	
Max. Viscosity	<b>50din/sec</b>	
Paint Reservoir	700ml	
Nozzle	Φ1.8mm	
Net Weight	2.5kgs	
Hose Length	1.8m	
Q'ty per Carton	2pcs	
Q'ty of 20'/40'/40'HQ	1180/2376/2728pcs	



**Accessories:**  
1pc viscosity measuring cup,  
1pc 1.8m hose, 1pc shoulder belt.

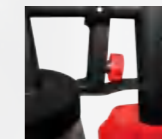


# HVLP Floor Based Spray Gun

• Multiple spraying patterns: round, horizontal fan & vertical fan



• Adjustable spray flow



• Dust proof and moisture proof on-off switch

• Quick replaceable filter

**Built-in air turbine and sprayer in one low vibration and low sound**

Model	WT-910FF	
Rated Voltage	220-240V~	120V~
Rated Frequency	50Hz	60Hz
Rated Power	<b>500W</b>	<b>3.0A</b>
Max. Flow	<b>700ml/min</b>	
Max. Viscosity	<b>50din/sec</b>	
Paint Reservoir	700/800ml	
Nozzle	Φ2.6mm	
Net Weight	2.0kgs	
Hose Length	1.8m	
Q'ty per Carton	4pcs	
Q'ty of 20'/40'/40'HQ	1632/3264/3744pcs	



**Accessories:**  
1pc viscosity measuring cup,  
1pc 1.8m hose, 1pc shoulder belt.



# HVLP Floor Based Spray Gun



Quick paint changing and easy cleaning

Multiple spraying patterns: round, horizontal fan & vertical fan

Adjustable spray flow



**Built-in air turbine and sprayer in one low vibration and low sound**



**Accessories:**  
1pc viscosity measuring cup,  
1pc 1.8m hose, 1pc shoulder belt.



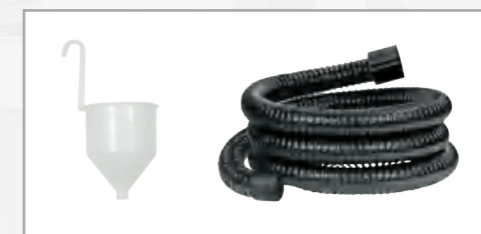
# HVLP Floor Based Spray Gun

## Features:

- Multiple spraying patterns: round, horizontal & vertical fan
- Adjustable spray flow
- Quick paint changing and easy cleaning



**Built-in air turbine and sprayer in one low vibration and low sound**



**Accessories:**  
1pc viscosity measuring cup,  
1pc 1.8m hose.



Model	WT-910FC	
Rated Voltage	220-240V~	120V~
Rated Frequency	50Hz	60Hz
Rated Power	<b>900W</b>	<b>4.2A</b>
Max. Flow	<b>800ml/min</b>	
Max. Viscosity	<b>90din/sec</b>	
Paint Reservoir	700/800ml	
Nozzle	Φ2.6mm	
Net Weight	2.8kgs	
Hose Length	1.8m	
Q'ty per Carton	2pcs	
Q'ty of 20'/40'/40'HQ	832/1664/1910pcs	

# HVLP Spray Gun with Trolley

Model	WT-FB13C-T
Rated Voltage	220-240V~
Rated Frequency	50Hz
Rated Power	<b>1000W</b>
Max. Flow	<b>800ml/min</b>
Max. Viscosity	<b>60din/sec</b>
Paint Reservoir	800ml
Nozzle	Φ1.8/2.6mm
Cable Length	2.0m
Hose Length	3.0-4.5m
Packing Size	29.5x29x47cm
Packing Weight	4.8kgs
Q'ty per Carton	2pcs
Q'ty of 20'/40'/40'HQ	620/1240/1380pcs

**Accessories:**  
1pc viscosity measuring cup, 1pc 3m hose,  
1pc nozzle Φ1.8/2.6mm.



• Multiple spraying patterns.

• Quick release from pistol part, more convenient for cleaning.

• Hose and cable storage structure, more convenient to pack up the unit with 3m's air hose.

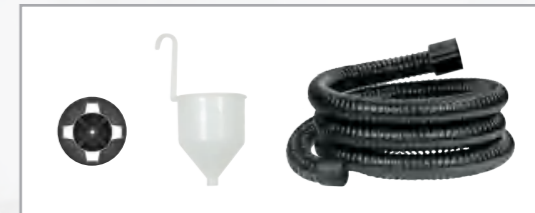
• Easily replaceable filter.

• Innovative wheel design.

# HVLP Spray Gun with Trolley

Model	WT-FB14D-T
Rated Voltage	220-240V~ 120V~
Rated Frequency	50Hz 60Hz
Rated Power	<b>1100W 7.0A</b>
Max. Flow	<b>1000ml/min</b>
Max. Viscosity	<b>100din/sec</b>
Paint Reservoir	800ml
Nozzle	Φ1.8/2.6mm
Cable Length	3m
Hose Length	4.0-6.0m
Packing Size	29.5x29x50cm
Packing Weight	7.2kgs
Q'ty per Carton	2pcs
Q'ty of 20'/40'/40'HQ	504/1040/1320pcs

**Accessories:**  
1pc viscosity measuring cup, 1pc 4m hose,  
1pc nozzle Φ1.8/2.6mm.



• Multiple spraying patterns

• Stable double telescopic handle

• Economic plastic pistol part and air hose

• Easily replaceable filter

• Extra-large wheel for stable dragging

# HVLP Spray Gun with Trolley

# HVLP Floor Based Spray Gun

**Professional**



Model	WT-FB13D-T	
Rated Voltage	220-240V~	120V~
Rated Frequency	50Hz	60Hz
Rated Power	<b>1100W</b>	<b>7.0A</b>
Max. Flow	<b>1000ml/min</b>	
Max. Viscosity	<b>100din/sec</b>	
Paint Reservoir	800ml	
Nozzle	Ø1.3/1.8/2.5mm	
Packing Size	29.5x29x50cm	
Packing Weight	7.5kgs	
Q'ty per Carton	2pcs	
Q'ty of 20'/40'/40'HQ	504/1040/1320pcs	

**Accessories:**  
1 pc viscosity measuring cup, 1 pc 5m hose,  
2 pcs spare nozzles.



**Professional**



Model	WT-FB14E	
Rated Voltage	220-240V~	120V~
Rated Frequency	50Hz	60Hz
Rated Power	<b>1200W</b>	<b>7.0A</b>
Max. Flow	<b>1000ml/min</b>	
Max. Viscosity	<b>100din/sec</b>	
Paint Reservoir	1000ml	
Nozzle	Ø1.3/1.8/2.5mm	
Hose Length	4.2kgs	
Packing Size	46x22.5x29cm	
Packing Weight	4.2kgs	
Q'ty per Carton	2pcs	
Q'ty of 20'/40'/40'HQ	840/1680/1880pcs	

**Accessories:**  
1 pc viscosity measuring cup, 1 pc 2m hose,  
2 pcs spare nozzles.





# Solenoid Spray Gun



Model	WT-SN13A
Rated Voltage	220-240V~
Rated Frequency	50Hz
Rated Power	<b>80W</b>
Max. Flow	<b>280ml/min</b>
Max. Viscosity	<b>30din/sec</b>
Paint Reservoir	800ml
Nozzle	Ø0.8mm
Net Weight	1.6kgs
Unit Size	24x12x23.5cm

Model	WT-SN13B
Rated Voltage	220-240V~ 120V~
Rated Frequency	50Hz 60Hz
Rated Power	<b>110W 1.8A</b>
Max. Flow	<b>300ml/min</b>
Max. Viscosity	<b>60din/sec</b>
Paint Reservoir	800ml
Nozzle	Ø0.8mm
Net Weight	1.8kgs
Unit Size	24x12x25cm

Model	WT-SN13C
Rated Voltage	220-240V~ 120V~
Rated Frequency	50Hz 60Hz
Rated Power	<b>130W 2.2A</b>
Max. Flow	<b>320ml/min</b>
Max. Viscosity	<b>60din/sec</b>
Paint Reservoir	800ml
Nozzle	Ø0.8mm
Net Weight	1.8kgs
Unit Size	26x12x26cm

Model	WT-SN13D
Rated Voltage	220-240V~ 120V~
Rated Frequency	50Hz 60Hz
Rated Power	<b>110W 1.8A</b>
Max. Flow	<b>300ml/min</b>
Max. Viscosity	<b>60din/sec</b>
Paint Reservoir	800ml
Nozzle	Ø0.8mm
Net Weight	1.8kgs
Unit Size	26x12x25.5cm



# Solenoid Spray Gun

# Solenoid Spray Gun



Model	WT-980PQ
Rated Voltage	220-240V~
Rated Frequency	50Hz
Rated Power	<b>60W</b>
Max. Flow	<b>260ml/min</b>
Max. Viscosity	<b>30din/sec</b>
Paint Reservoir	800ml
Nozzle	Ø0.8mm
Net Weight	1.2kgs
Unit Size	21x11x23cm

Model	WT-981PQ
Rated Voltage	220-240V~ 120V~
Rated Frequency	50Hz 60Hz
Rated Power	<b>110W 2.2A</b>
Max. Flow	<b>300ml/min</b>
Max. Viscosity	<b>60din/sec</b>
Paint Reservoir	800ml
Nozzle	Ø0.8mm
Net Weight	1.5kgs
Unit Size	22x11x24cm

Model	WT-982PQ
Rated Voltage	220-240V~
Rated Frequency	50Hz
Rated Power	<b>60W</b>
Max. Flow	<b>260ml/min</b>
Max. Viscosity	<b>30din/sec</b>
Paint Reservoir	800ml
Nozzle	Ø0.8mm
Net Weight	1.5kgs
Unit Size	22.0x11.0x24.0cm

Model	WT-983PQ
Rated Voltage	220-240V~
Rated Frequency	50Hz
Rated Power	<b>110W</b>
Max. Flow	<b>300ml/min</b>
Max. Viscosity	<b>60din/sec</b>
Paint Reservoir	800ml
Nozzle	Ø0.8mm
Net Weight	1.5kgs
Unit Size	22.0x11.0x24.0cm



## Cone Nozzle



Traditional Cone Nozzle, obtain round pattern with limited diameter.

## patent



Innovative Fan Nozzle effects two extra spray patterns including horizontal and vertical pattern. Easily adjust the spray patterns by rotating 270° between horizontal and vertical fan, and enjoy more efficiency on different working situation.

## WT-SN13A / WT-SN13B / WT-SN13C / WT-SN13D & WT-980PQ / WT-981PQ / WT-982PQ / WT-983PQ

Package	Accessories	Packing Size	Q'ty per Carton	Carton Size	Q'ty of 20'/40'/40'HQ
	1pc viscosity measuring cup, 1pc cleaning pin, 2pcs valves, 1pc Ø0.8mm spare nozzle, 1pc wrench	26.0x12.0x24.5cm	5pcs	63.0x28.0x27.5cm	3085/6835/8545pcs
	1pc viscosity measuring cup, 1pc cleaning pin, 1pc piston 1pc Ø0.8mm spare nozzle, 1pc wrench	26.0x12.0x24.5cm	5pcs	63.0x28.0x27.5cm	3150/6400/7100pcs
	1pc viscosity measuring cup, 1pc cleaning pin, 1pc putty knife 1pc piston, 3pcs brushes, 1pc wrench	29x29x10.5cm	5pcs	54.5x33.5x33.0cm	1840/3680/4200pcs

# Electric Paint Roller - Remote Control



5m paint feed hose supply faster painting and easier cleaning  
Faster: pump paint to roller head by 40s  
Easier: direct clean all hoses by connecting with tap adapter

Remote control system ensure consistent and clean paint application

360° spatter shield for drip-free and better protection on both wall and ceiling

Direct feed system ensure more convenient work and suitable for all kinds of bucket sizes

Suitable for all types of wall paint

**Accessories:**

1pc 230mm roller, 1pc 5m flexible hose  
2pcs Al. extension poles (0.45m/pc)

Model	WT-ER15A	
Rated Voltage	230-240V~	120V~
Rated Frequency	50Hz	60Hz
Rated Power	<b>45W</b>	<b>0.7A</b>
Max. Flow Rate	<b>450ml/min</b>	
Pumping Height	<b>4.5m</b>	
Net Weight	1.5kgs	
Unit Size	29.0x16.0x18.0cm	
Q'ty of 20'/40'/40'HQ	1452/3000/3264pcs	



# Electric Paint Roller - Remote Control



5m paint feed hose supply faster painting and easier cleaning  
Faster: pump paint to roller head by 40s  
Easier: direct clean all hoses by connecting with tap adapter

Remote control system ensure consistent and clean paint application

360° spatter shield for drip-free and better protection on both wall and ceiling

Directly feed system ensure more convenient work and suitable for all kinds of bucket sizes

Innovated Easy clean system to smart your cleaning work in 60 seconds

Suitable for all types of wall paint



Flow button      Power button

Push the power button, the power indicator will turn to green. The flow indicator will default at M. the flow can be selected by pressing the flow button.

**Accessories:**

1pc 230mm roller, 1pc 5m flexible hose  
2pcs Al. extension poles (0.45m/pc)

Model	WT-PR17A	
Rated Voltage	230-240V~	120V~
Rated Frequency	50Hz	60Hz
Rated Power	<b>45W</b>	<b>0.7A</b>
Max. Flow Rate	<b>450ml/min</b>	
Pumping Height	<b>4.5m</b>	
Net Weight	1.5kgs	
Unit Size	29.0x16.0x18.0cm	
Q'ty of 20'/40'/40'HQ	1452/3000/3264pcs	





**NEW**



**NEW**

- Automation assembly
- Compact design
- Detachable electric cable

Model	WT-RFA0118		
Rated Voltage	220-240V~	220-240V~	120V~
Rated Frequency	50Hz	50Hz	60Hz
Rated Power	<b>2000W(B)</b>	<b>1600W(A)</b>	<b>1500W</b>
Temperature	I : 440°C II : 600°C	I : 400°C II : 550°C	I : 400°C II : 500°C
Air Flow	I : 250L/min II : 550L/min	I : 250L/min II : 550L/min	I : 250L/min II : 550L/min



Model	WT-RFA0518		
Rated Voltage	220-240V~	220-240V~	120V~
Rated Frequency	50Hz	50Hz	60Hz
Rated Power	<b>2000W(B)</b>	<b>1600W(A)</b>	<b>1500W</b>
Temperature	I : 440°C II : 600°C	I : 400°C II : 550°C	I : 400°C II : 500°C
Air Flow	I : 250L/min II : 550L/min	I : 250L/min II : 550L/min	I : 250L/min II : 550L/min



**NEW**



Model	WT-RFA0718			
Rated Voltage	220-240V~		120V~	
Rated Frequency	50Hz		60Hz	
Rated Power	<b>2000W</b>		<b>1500W</b>	
Temperature	Cool Down: 50°C			
	I : 50°C	II : 100°C	I : 50°C	II : 100°C
	100°C	200°C	80°C	200°C
	150°C	300°C	120°C	300°C
	200°C	400°C	150°C	400°C
	250°C	500°C	200°C	500°C
	350°C	600°C	300°C	600°C
Air Flow	Cool Down: 550L/min			
	I : 250L/min II : 550L/min			



**NEW**

Model	WT-RFA0818		
Rated Voltage	220-240V~	220-240V~	120V~
Rated Frequency	50Hz	50Hz	60Hz
Rated Power	<b>2300W(B)</b>	<b>2000W(A)</b>	<b>1500W</b>
Temperature	Cool Down: 50°C		
	1- 6: 50-600°C		
Air Flow	1: 180L/min 2: 200L/min 3: 220L/min 4: 240L/min 5: 260L/min 6 & Cool Down: 550L/min		

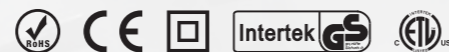


# Heat Gun



Model	WT-RFA0918	
Rated Voltage	220-240V~	120V~
Rated Frequency	50Hz	60Hz
Rated Power	<b>2000W</b>	<b>1500W</b>
Temperature	I : 50°C II : 480°C III: 600°C	
Air Flow	I : 250L/min II : 250L/min III: 500L/min	

Model	WT-RFA1018	
Rated Voltage	220-240V~	120V~
Rated Frequency	50Hz	60Hz
Rated Power	<b>2000W</b>	<b>1500W</b>
Temperature	I : 50°C II : 50-480°C III: 90-600°C	
Air Flow	I : 250L/min II : 250L/min III: 500L/min	



# Heat Gun



Model	WT-RFA4021	
Rated Voltage	220-240V~	120V~
Rated Frequency	50Hz	60Hz
Rated Power	<b>1800W</b>	<b>1300W</b>
Temperature	I : 400°C II : 550°C	
Air Flow	I : 250L/min II : 550L/min	



## Optional Accessories



# Heat Gun



Model	WT-HG12AI	WT-HG12AII
Rated Voltage	220-240V~	220-240V~ 120V~
Rated Frequency	50Hz	50Hz 60Hz
Rated Power	<b>1600W</b>	<b>2000W 1500W</b>
Temperature	I : 350°C II : 550°C	I : 350°C II : 550°C
Air Flow	I : 250L/min II : 550L/min	I : 250L/min II : 550L/min
Net Weight	0.75kg	0.75kg
Unit Size	25.0x9.1x25.5cm	25.0x9.1x25.5cm



Model	WT-HG12B
Rated Voltage	220-240V~ 120V~
Rated Frequency	50Hz 60Hz
Rated Power	<b>2000W 1500W</b>
Temperature	I : 350°C II : 550°C
Air Flow	I : 250L/min II : 550L/min
Net Weight	0.75kg
Unit Size	25.0x9.1x25.5cm






Model	WT-HG12C
Rated Voltage	220-240V~ 120V~
Rated Frequency	50Hz 60Hz
Rated Power	<b>2000W 1500W</b>
Temperature	I : 50°C II : 100°C I : 40°C II : 90°C 100°C 200°C 80°C 180°C 150°C 300°C 120°C 250°C 200°C 400°C 150°C 350°C 250°C 500°C 200°C 400°C 350°C 600°C 300°C 500°C
Air Flow	I : 250L/min II : 550L/min
Net Weight	0.75kg
Unit Size	25.0x9.1x25.5cm

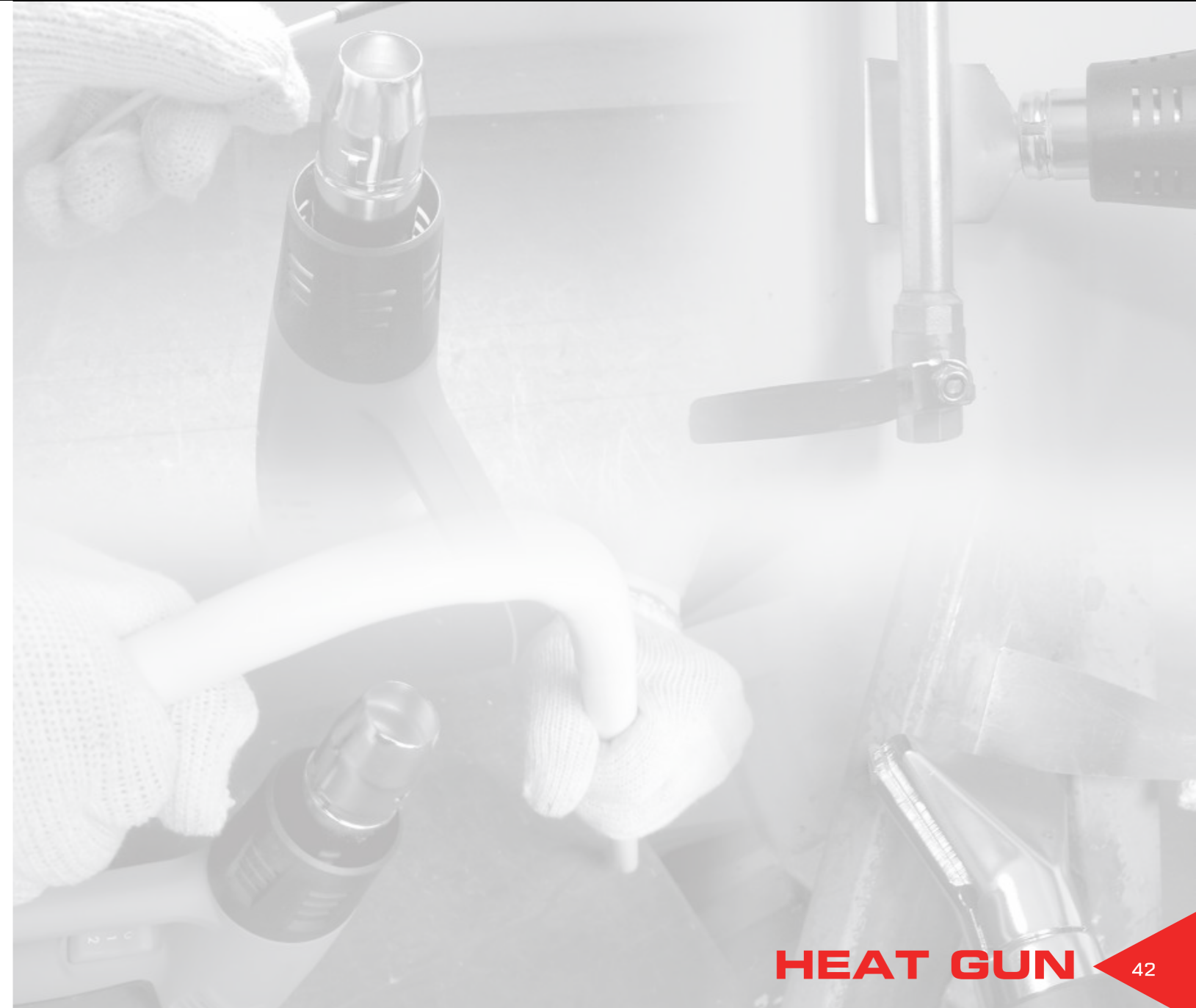


Model	WT-HG12D
Rated Voltage	220-240V~ 120V~
Rated Frequency	50Hz 60Hz
Rated Power	<b>2000W 1500W</b>
Temperature	I : 50°C I : 50°C II : 50-600° II : 50-500°C
Air Flow	1: 120L/min 2: 160L/min 3: 200L/min 4: 300L/min 5: 400L/min 6: 500L/min
Net Weight	0.75kg
Unit Size	25.0x9.1x25.5cm



## Optional Package

Package	Accessories	Packing Size	Q'ty per Carton	Carton Size	Q'ty of 20'/40'/40'HQ
	1pc reflector nozzle(1), 1pc cone nozzle(2), 1pc glass protector nozzle(3), 1pc fishtail nozzle(4)	26.0x9.5x26.5cm	5pcs	50.0x28.0x29.5cm	3670/7500/8420pcs
	1pc reflector nozzle, 1pc scraper, 1pc glass protector nozzle, 1pc cone nozzle, 1pc fishtail nozzle, 1pc scraper hook, 1pc putty knife	25.0x8.5x26.0cm	5pcs	53.0x29.5x28.0cm	3080/6160/7000pcs
	1pc reflector nozzle, 3pcs scrapers, 1pc glass protector nozzle, 1pc cone nozzle, 1pc fishtail nozzle, 1pc scraper hook, 1pc putty knife	25.5x10.5x26.8cm	5pcs	55x29.5x29.5cm	2730/5650/6450pcs



**HEAT GUN**





Model	<b>WT-CB15A</b>
Rated Voltage	20V DC
Current Draw	<b>10A</b>
No-load Speed	15000 - 18000rpm
Air Flow	2.2m <sup>3</sup> /min
Q'ty of 20'/40'/40'HQ	2010/4026/5034



**Accessories:**  
1pc dust bag,  
**other options:**  
1m air hose with brush.



**20V DC Lithium battery (2.0Ah/4.0Ah)**

Convenient For Clean Up Or Vacuum Functions.



Model	<b>WT-EB17A</b>
Rated Voltage	220-240V~
Power Input	<b>400W</b>
No-load speed	15000 - 18000rpm/ 0-15000rpm
Air Flow	2.2m <sup>3</sup> /min
Q'ty of 20'/40'/40'HQ	3948/7908/7908



**Accessories:**  
1pc dust bag,  
**other options:**  
1m air hose with brush.



Model	<b>WT-EB15A</b>
Rated Voltage	220 - 240V~
Power Input	<b>400W</b>
No-load speed	13000rpm
Air Flow	2.8m <sup>3</sup> /min
Q'ty of 20'/40'/40'HQ	1848/3858/4824



**Accessories:**  
1pc dust bag,  
**other options:**  
1m air hose with brush.



Convenient For Clean Up Or Vacuum Functions.



Model	<b>WT-EB15B</b>
Rated Voltage	220 - 240V~
Power Input	<b>600W</b>
No-load speed	0 - 16000rpm
Air Flow	3.2m <sup>3</sup> /min
Q'ty of 20'/40'/40'HQ	1848/3858/4824



**Accessories:**  
1pc dust bag,  
**other options:**  
1m air hose with brush.



# Soldering Gun



With LED display

Model	WT700	
Rated Voltage	230-240V~	120V~
Rated Frequency	50Hz	60Hz
Rated Power	<b>200W</b>	<b>1.5A</b>
Light	LED	
Net Weight	0.9kg	
Unit Size	23x18x5cm	



Package	Accessories	Packing Size	Q'ty per Carton	Carton Size	Q'ty of 20'/40'/40'HQ
	1pc wrench, 2pcs soldering tips, 10g soldering reel, 10g soldering flux	26.5x7.1x21.0cm	10pcs	46x31x36cm	5700/11600/13200pcs



Adjustment knob



Area A: 70°C-200°C  
Cutting polyfoam



Area B: 200°C-350°C  
Normal soldering



Area C: 350°C-500°C  
Engraving on wood



With LED display

# Soldering Gun

Model	WT98-S	
Rated Voltage	230-240V~	120V~
Rated Frequency	50Hz	60Hz
Rated Power	<b>100W</b>	<b>0.8A</b>
Light	LED	
Net Weight	0.68kg	
Unit Size	17.5x16.0x5.0cm	



Package	Accessories	Packing Size	Q'ty per Carton	Carton Size	Q'ty of 20'/40'/40'HQ
	2pcs soldering tips, 10g soldering reel, 10g soldering flux	25.7x21.0x6.3cm	10pcs	45x28x32cm	7600/16000/18000pcs

## WT98-S / WT98-B / WT98-C



With LED display

Model	WT98-B	
Rated Voltage	220-240V~	120V~
Rated Frequency	50Hz	60Hz
Rated Power	<b>100W</b>	<b>0.8A</b>
Light	2.2V, 0.25A	
Net Weight	0.63kg	
Unit Size	17.5x16.0x5.0cm	

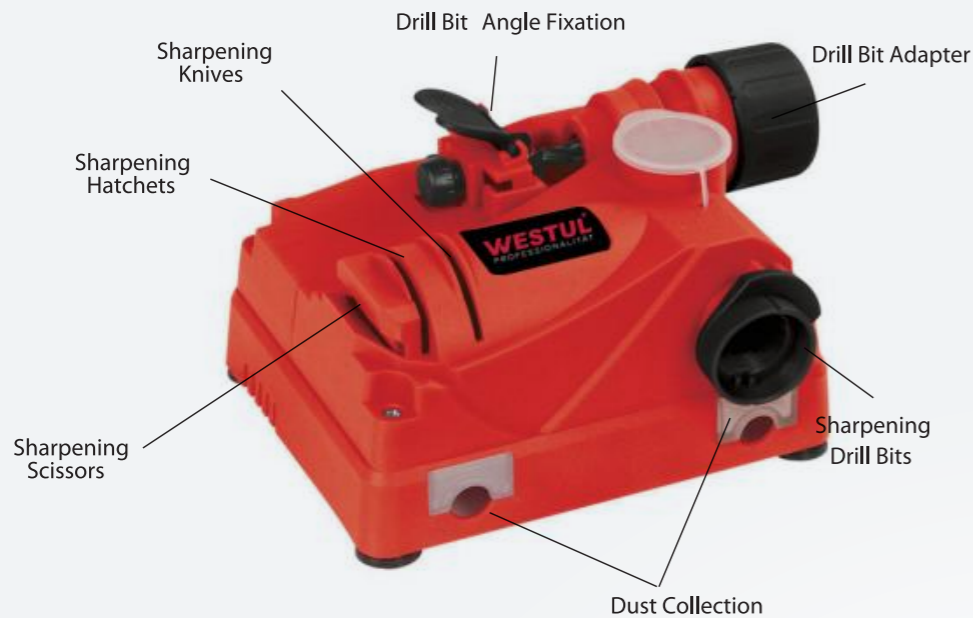
Model	WT98-C	
Rated Voltage	220-240V~	
Rated Frequency	50Hz	
Rated Power	<b>175W</b>	
Light	LED	
Net Weight	0.63kg	
Unit Size	17.5x16.0x5.0cm	



Package	Accessories	Packing Size	Q'ty per Carton	Carton Size	Q'ty of 20'/40'/40'HQ
	N/A	23.3x23.5x5.3cm	24pcs	49.5x35.5x27.5cm	16800/33360/38400pcs
	N/A	17.5x24.5cm	10pcs	46.0x28.0x22.0cm	11000/22000/25190pcs
	1pc soldering tip, 10g soldering reel, 10g soldering flux	18.5x25.6cm	10pcs	46.0x29.0x22.0cm	10000/20000/24890pc
	2pcs soldering tips, 10g soldering reel, 10g soldering flux	24.5x20.5x6.0cm	10pcs	45.0x28.0x32.0cm	7600/16000/18000pcs

# Multi-Purpose Sharpener

# Multi-Purpose Sharpener



Model	<b>WT-950M</b>
Rated Voltage	220-240V~
Rated Frequency	50Hz
Rated Power	<b>150W</b>
Drill Diameter	φ3-φ13mm
Net Weight	1.63kg
Unit Size	20.0x18.0x11.5cm



## SUITABLE FOR:

### Knives




### Scissors



### Drill Bit



Package	Accessories	Packing Size	Q'ty per Carton	Carton Size	Q'ty of 20'/40'/40'HQ
	1pc drill adapter	21.5x22.0x14.0cm	4pcs	46.0x24.5x31.0cm	2860/5720/6600pcs

**LASER  
POSITIONING  
GUIDE**



<b>Model</b>	<b>WT-101A</b>
Max. Drill Capacity	10mm
Net Weight	0.28kg
Unit Size	24.2x10.0x5.5cm



Package	Accessories	Packing Size	Q'ty per Carton	Carton Size	Q'ty of 20'/40'/40'HQ
	3 coin batteries (1.5V for laser), 1pc hanging cover	25.0x12.3x6.0cm	20pcs	53.0x28.0x34.0cm	21000/42000/43500pcs

**Description:** WT-101A is combined by a laser level and a drill dust catcher. It provides two main functions: 1) a convenient working condition of marking a line/point by laser; 2) collecting dust during process of drilling holes.

WT-101A/B is pressed against the wall and switched on. A battery-powered pump generates a vacuum which causes the device to stick to all types of normal indoor surfaces. Both hands then will be free for the job in hand. Once the job is finished, the device can be released from the wall by pressing the vent button. One device gives 2 important functions - position in desired spot and keep the working environment clean.



**1. Line up:** Positioning the unit with correct direction of laser line, switching on the unit to stick the unit onto the wall. Switch on laser, the user could mark the locations where to drill the holes through the laser line.



**2. Detach:** After finishing the mark, switch off the pump, then press the vent button to release the vacuum and take away the unit from the surface.



**3. Drill:** Rotating the unit to the drill dust catcher function and start the vacuum stick function again to stay on wall. Drilling with WT-101A which sticks firmly to the wall and the user's both hands are free for drilling. Detach: After drilling each hole, repeat the step 2 to take WT-101A off from the wall, then re-locate the unit if needed.



**4. Empty:** Open the dust collector part of WT-101A and empty the dust into a suitable container. Unnecessary for cleaning up.



**5. Hanging cover:** The cover could be hanged on the wall. The user could put the unit on cover after usage.



**Technical Daat:**  
 - Max. Drill Capacity: 10mm  
 - 2xAA batteries powered motor  
 - with ON/OFF Switch  
 - with pressure release button  
 - 3 coin batteries (1.5V for laser)

## Dust Collection Box



- Maximum drill bit size that can be used with dust collector is 3/8 inch diameter
- Weight, incl. batteries and protective cover, 6.53 ounces
- Dimensions, 6.0 x 3.1 x 2.0 inch
- Suitable for finished & unfinished wood surface and dry wall, smooth tile surface

Model	WT-102A
Voltage	3V
Max. Drill Capacity	10mm
Net Weight	0.19kg
Unit Size	16.0x8.0x4.5cm

## Dust Collection Box



Model	WT-CDCL4-L
Voltage	4V
Max. Drill Capacity	13mm
Net Weight	0.28kg
Unit Size	17.2x9.0x6.0cm

- Dust free drilling
- Double bubble laser level
- Automatic adsorption
- Built in rechargeable lithium battery